

An aerial night-time rendering of the Villa Verde Residence. The image shows a modern, multi-story residential complex with a mix of light-colored facades and dark, large glass windows. The building is illuminated from within, and some exterior lighting is visible. A swimming pool with lounge chairs and palm trees is located on the left side of the complex. Several cars are parked or driving on the roads surrounding the property. The overall atmosphere is sophisticated and contemporary.

VILLA VERDE RESIDENCE

By J Seven

A HARMONY OF LIGHT AND
SOPHISTICATION RESHAPES
THE HORIZON

Every graceful curve
whispers of craftsmanship,
while each glimmer and
shadow captures a fleeting
dance of brilliance.



A NEW ERA





In the thriving neighborhood of Muraikh,
A contemporary icon emerges — a celebration
of innovation and elevated living. A Sanctuary
for those seeking tranquility and inspiration.

Here, in a prime location brimming with
potential, lies a serene retreat — where aspirations
are realized, creativity flourishes, and life finds
its perfect harmony.



LIGHTNESS & ELEGANCE
ACROSS THE SKYLINE

NATURE'S POETRY

Villa Verde Residence is a symphony of luxury and nature intertwined. Its verdant spaces and sophisticated design create a haven of tranquility, embodying a modern ode to green living. Pause for a moment and ask yourself

“What dreams will bloom in this sanctuary?”

Where nature and elegance unite
in perfect harmony.

Where every leaf whispers peace,
and every space invites you to breathe.
If you paused a moment longer,

WHAT HIDDEN TRANQUILITY
WOULD YOU UNCOVER?



WHERE A VISION OF NATURAL ELEGANCE COMES TO LIFE

Nestled in the peaceful surroundings of Muraikh, Villa Verde Residences are designed for those who seek serenity and sophistication in perfect harmony.





Comprising 25 meticulously designed villas, Villa Verde Residence embodies J Seven Real Estate's commitment to crafting spaces that inspire, soothe, and elevate. A perfect blend of nature's tranquility and luxurious living.

A sanctuary where those seeking serenity find a home that reflects their vision—a space inspired by the natural beauty of Muraikh, designed to rejuvenate, inspire, and elevate.

PROJECT FACTS

Property Type

Compound

Plot Area

10426.00 Sq.m / 112,221.27 Sqft

Description

25 No's (G + 1+ Ph) Attached Villa Club
House (G+1)

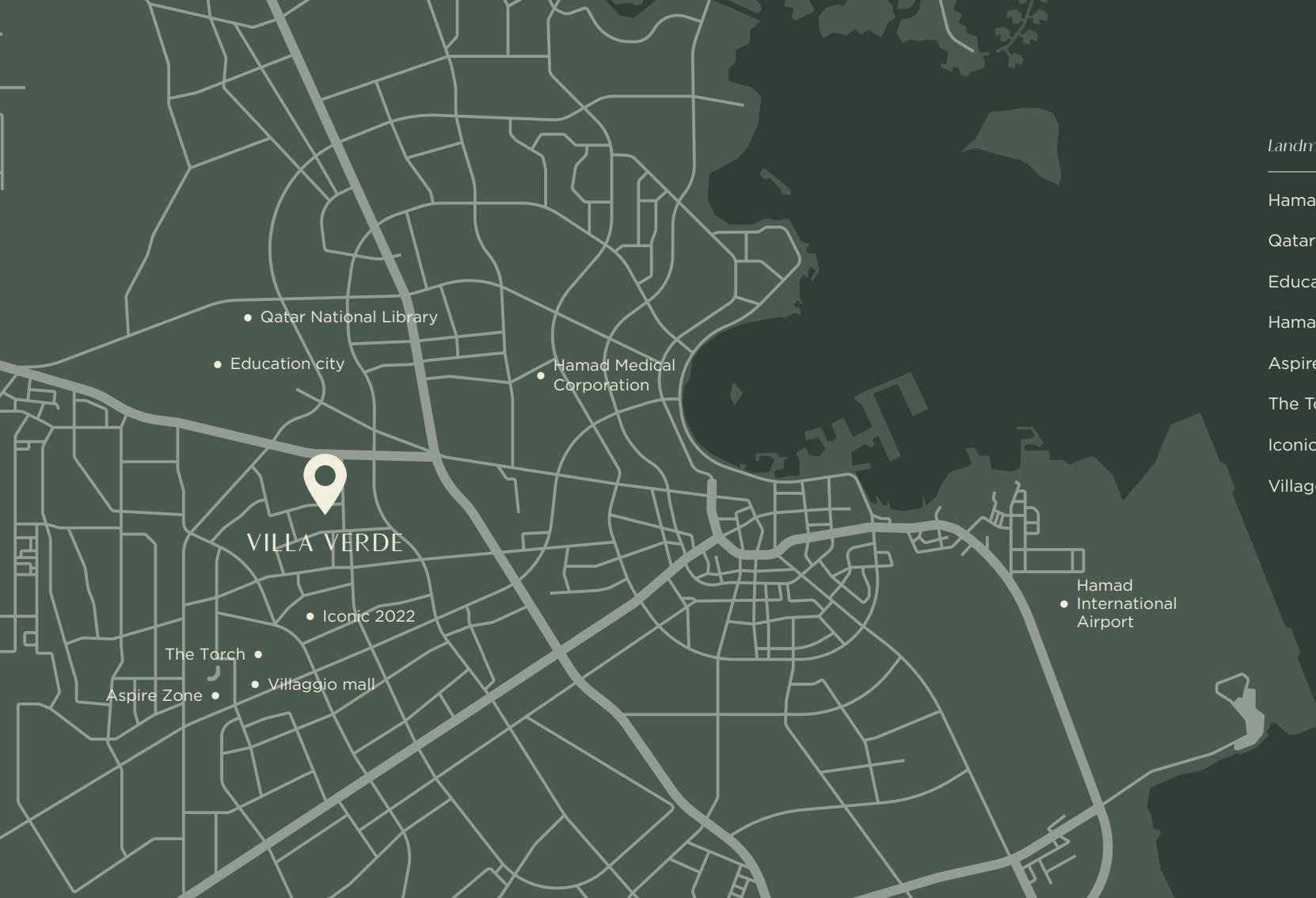
Number Of Villas 25

INSPIRATION OF VILLA VERDE

Villa Verde Residence is more than just a home;
it's a haven of nature and elegance. Step into a space
where every detail is crafted to rejuvenate and inspire.
Let the noise of the world fade away.



“AS YOU EMBRACE THE SERENE
BEAUTY OF GREEN LIVING ”



<i>Landmark</i>	<i>Distance</i>
Hamad International Airport	20 min
Qatar National Library	10 min
Education City	10 min
Hamad Medical Corporation	10 min
Aspire Zone	10 min
The Torch	10 min
Iconic 2022	10 min
Villaggio Mall	10 min



ENERGY AND COMPOSURE

Villa Verde Residence is nestled in the serene heart of Muraikh, a tranquil haven surrounded by nature's beauty. Yet, within its walls, a sense of peace and harmony effortlessly flourishes.

Step out to explore the quiet allure of Muraikh's green landscapes, then return to the serene haven of Villa Verde Residence, where tranquility and inspiration flourish.

“ Where every detail is
thoughtfully designed to
reflect nature’s elegance”

Discover villas enriched with organic materials, from the soothing texture of stone to the inviting warmth of natural wood, each a testament to Villa Verde Residence’s celebration of harmony and luxury.







“ STEP INTO VILLAS THAT
REDEFINE THE ESSENCE OF
LUXURIOUS GREEN LIVING ”

Expansive windows invite the natural beauty of Muraikh inside, while meticulously designed interiors, adorned with premium materials and elegant finishes, create a sanctuary that soothes the soul.

Every detail is crafted to inspire tranquility and elevate your lifestyle.

PREMIUM MATERIALS, TIMELESS SOPHISTICATION



White Wood Marble



Marble Hidden Skirting



Wooden Porcelain



Travertine Tiles



Wood Veneer



Wood Cladding



Wooden Vanities



Gypsum Cladding



Glass Partition



Mirror

White Wood Marble
Gypsum Cladding

Marble Hidden Skirting
Travertine Tiles

Wooden Porcelain
Porcelain Tiles

Wood Veneer
Glass Partition

Wood Cladding
Mirror

Wooden Vanities



Experience the perfect blend of safety, innovation, and design with ABB sockets. Engineered for durability and modern living, ABB brings smart energy solutions to every space.



Experience refined living with Sanvera. Our premium sanitary ware blends durability, elegance, and innovation to transform everyday spaces into timeless expressions of style and comfort.



Elevate your lifestyle with Fuji Lifts – Japanese precision delivering smooth, safe and stylish vertical transportation for residential and commercial buildings.



Secure your world with HikVision. Offering cutting-edge surveillance systems, HikVision provides crystal - clear imaging, smart monitoring, and peace of mind, 24/7.



German excellence at its finest. AEG appliances combine sleek design with superior performance, redefining comfort and efficiency in your everyday living.



Bring colors to life with Jotun. Renowned for quality and innovation, Jotun paints and coatings protect and beautify spaces with vibrant, lasting finishes.



Transform spaces into art with San Marco. Italian craftsmanship meets luxury in every stroke, offering timeless textures and elegant decorative finishes.





A WORLD OF RENEWAL AT YOUR DOORSTEP

Villa Verde Residence offers a thoughtfully curated selection of amenities, designed to embrace nature and luxury in perfect harmony. Bask in the tranquility of lush green spaces, where sunlight filters through the trees, casting a golden glow.

Unwind by the serene pool, a private oasis away from the city's rhythm. Rejuvenate your body and mind at the state-of-the-art fitness center, or find your flow along scenic jogging paths.



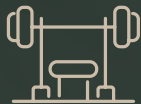
Swimming Pool



Children's
Play Area



Secure Entry and
24/7 Security



Indoor Fitness
Center



Herbal Tea
Lounge

At Villa Verde
Residence, every
moment is
an invitation to
live beautifully.





*Elegant spaces,
thoughtfully designed.
Every detail reflects harmony.
Tranquility is revealed.*

Villa Verde Residence. Breathtaking
views fuse with nature-inspired interiors.
Premium materials engage the senses.
A harmonious sanctuary, crafted with every
thoughtful detail



NATURAL LUXURY, INSPIRED LIVING

Step into a world where nature and comfort unite, where every corner evokes calm and every detail tells a story of peaceful elegance. Discover inspiration in the serene spaces, designed to restore and refresh.



An aerial photograph of a modern swimming pool at dusk. The pool is rectangular with a stone-tiled interior and a wooden deck surrounding it. A large, light-colored patio umbrella is open on the deck, next to a lounge chair. A small, glowing lantern sits on the deck. The pool's edge is illuminated with warm lights, and the water reflects the ambient light. Palm trees and other tropical plants are visible on the right side of the pool.

THE ART
OF LIVING, REDEFINED

FLOOR PLANS

SITE PLAN

Total Unit Net Area

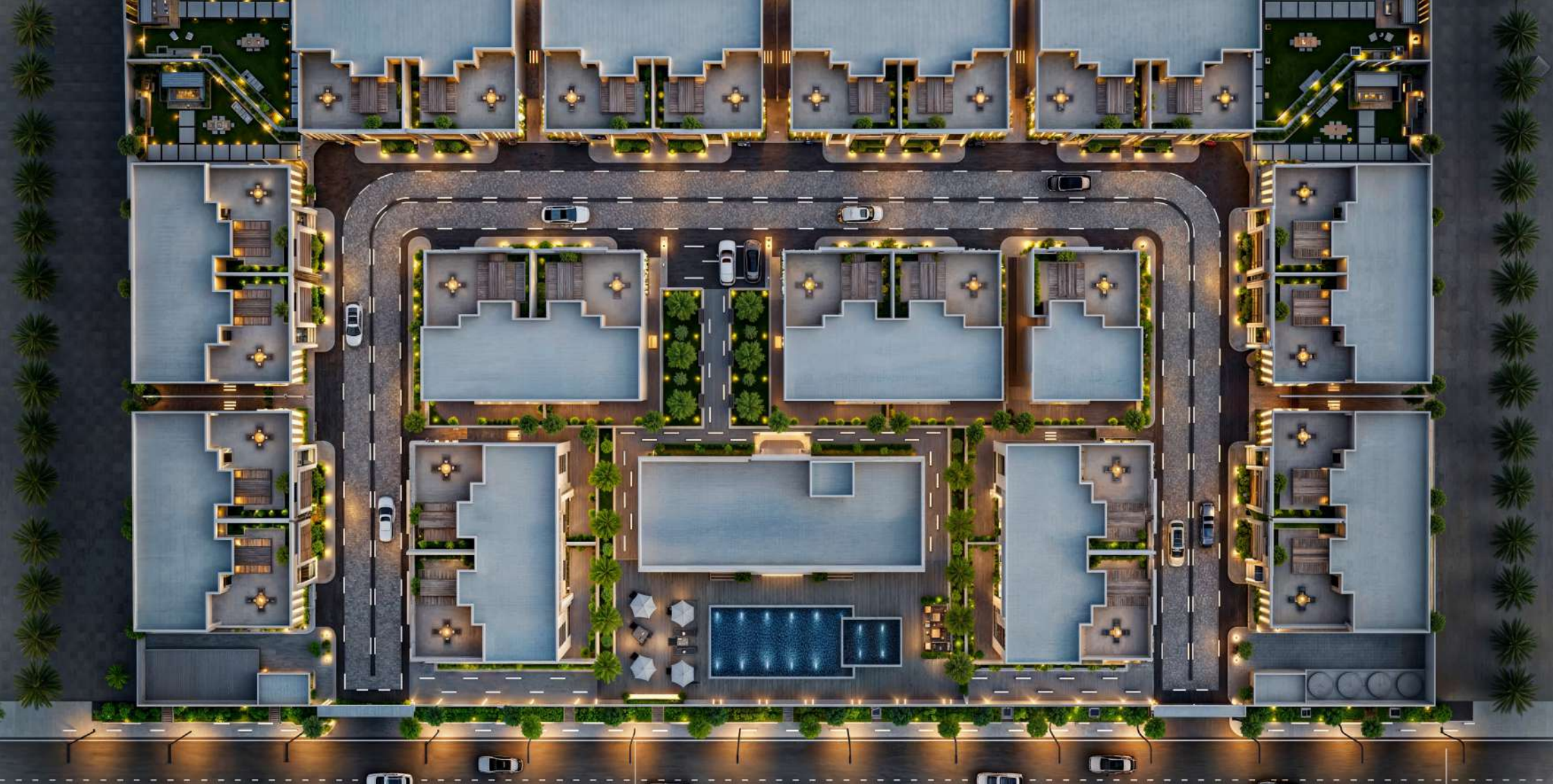
546 m² / 5,879.89 ft²

Description

24 No's (G+1+Ph) Attached Villa

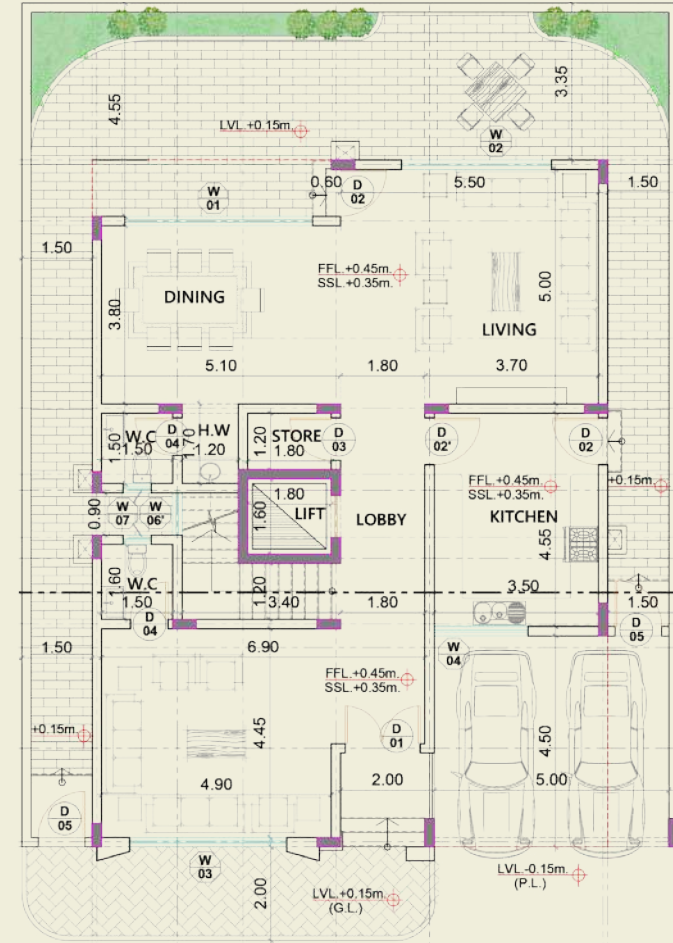
1 No's (G+1+Ph) Standalone Villa

Club House (G+1)



GROUND FLOOR

132 m² / 1,420.02 ft²



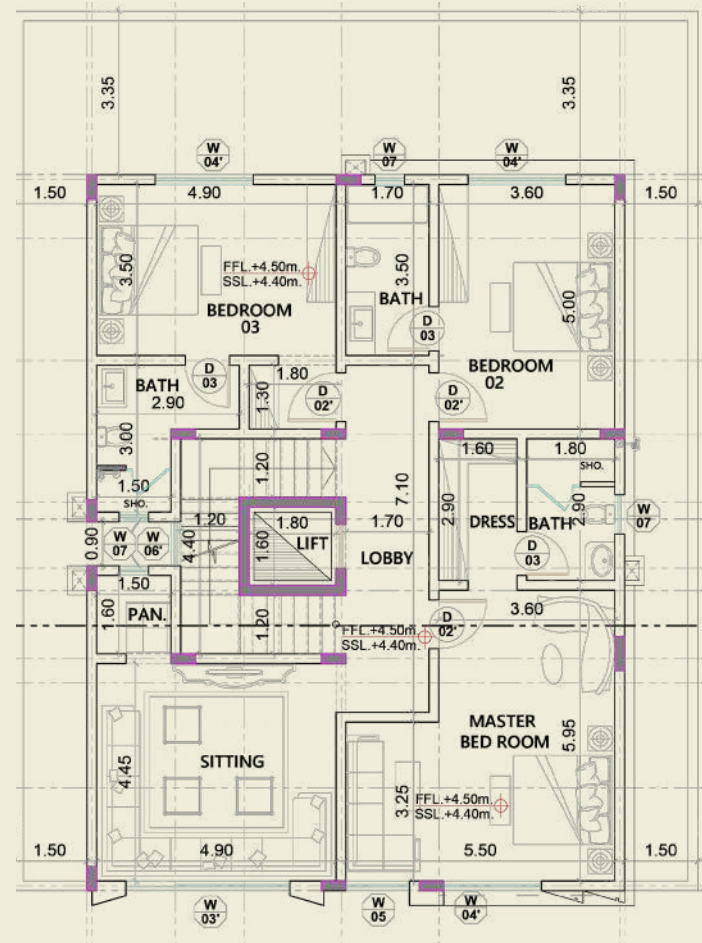


UNIT FLOOR PLANS

FIRST FLOOR

FLOOR AREA

158 m² / 1,701.47 ft²



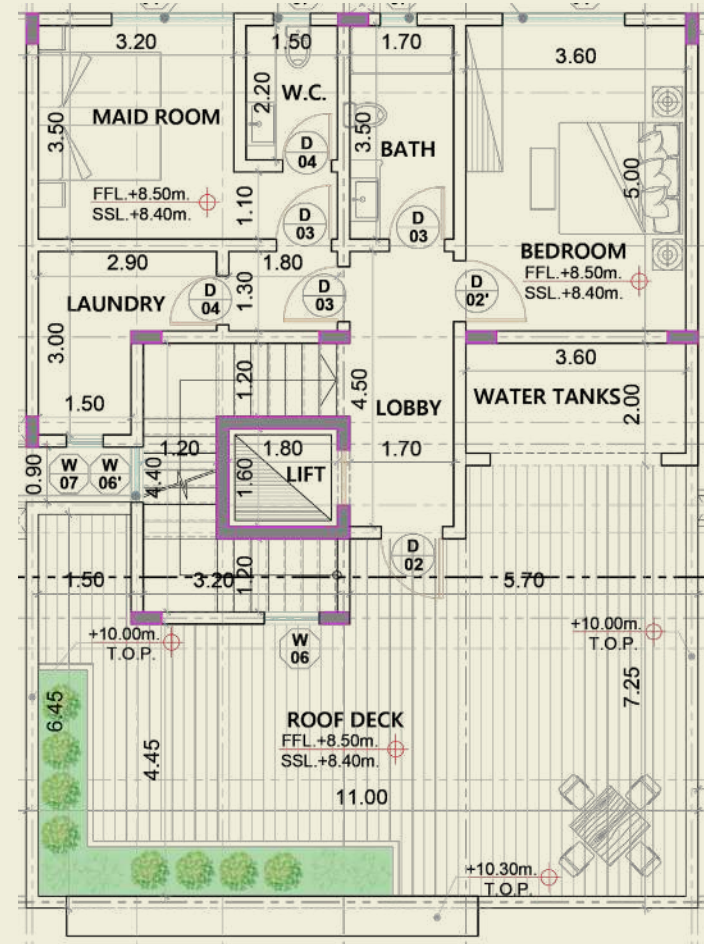


UNIT FLOOR PLANS

PENT HOUSE

FLOOR AREA

92 m² / 990.28 ft²



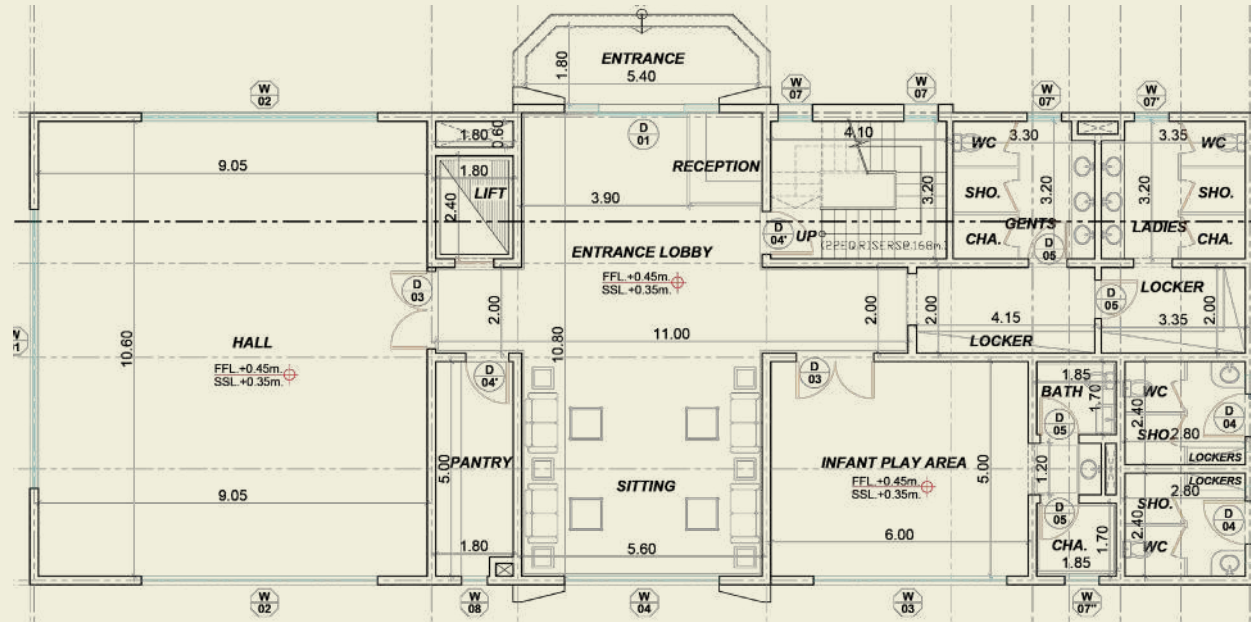


CLUB HOUSE

FLOOR AREA

CLUB HOUSE DESIGN COMPONENTS

SWIMMING POOL : 152 m²





UNIT FLOOR PLANS

CLUB HOUSE

FIRST FLOOR

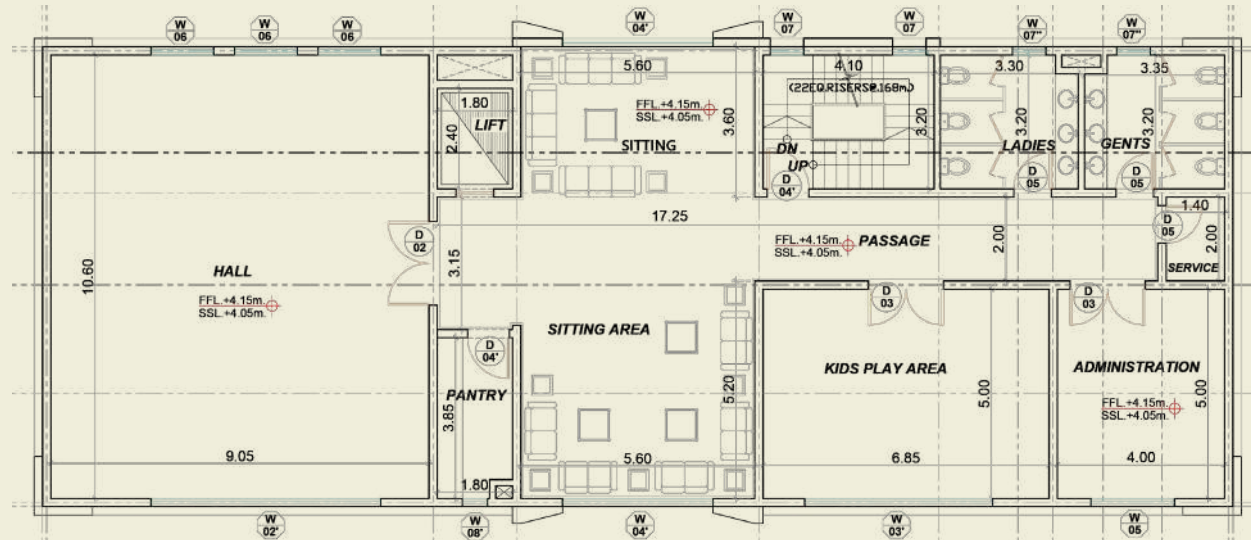
FLOOR AREA

315 m² / 3,391.73 ft²

CLUB HOUSE DESIGN COMPONENTS

GYM : 100 m²

SWIMMING POOL : 152 m²





Disclaimer:

1. Room dimensions are measured to structural elements, excluding wall finishes and construction tolerances.
2. Dimensions are provided by our consultant architects and are approximate. Information is subject to change without notice.
3. Actual villa area may vary from the stated area. Drawings are not to scale.
4. The developer reserves the right to make revisions.
5. Villa area is measured by the center line of partition walls, the exterior face of all external walls, and the exterior face of surrounding green areas and the lobby.
6. Terrace or garden area is measured by the center line of partition walls, the outermost face of the enclosing guard, and the external face of the adjoining garden or terrace.
7. Villas are measured at the typical floor level. Structural elements, including columns, may vary by floor level.
8. Villa sizes and layouts may vary slightly. Please refer to the sales agreement for the exact size of each villa.
9. All images, renderings, and layouts shown in this brochure are for illustrative purposes only and may not reflect the final executed product.



As a pioneering qatari conglomerate, j seven projects has established itself as a leader in creating distinctive developments that elevate modern living and business standards across qatar.

J seven projects encompasses a diverse range of companies, including real estate, interior design, trading & contracting, and custom carpentry & steelwork — each reflecting the brand's signature blend of innovation, functionality, and luxury. From residential masterpieces to commercial landmarks, j seven's portfolio caters to a discerning clientele seeking uncompromising quality and elevated experiences.

With an unwavering commitment to excellence and a design ethos rooted in qatari heritage, j seven projects continues to set new benchmarks in development. The group's impressive track record is a testament to its visionary approach, attention to detail, and ability to deliver world-class projects across multiple industries.

With a rapidly growing portfolio valued at billions of qar, j seven projects stands as a trailblazer in privately held development — shaping the future of qatar, one landmark at a time.

